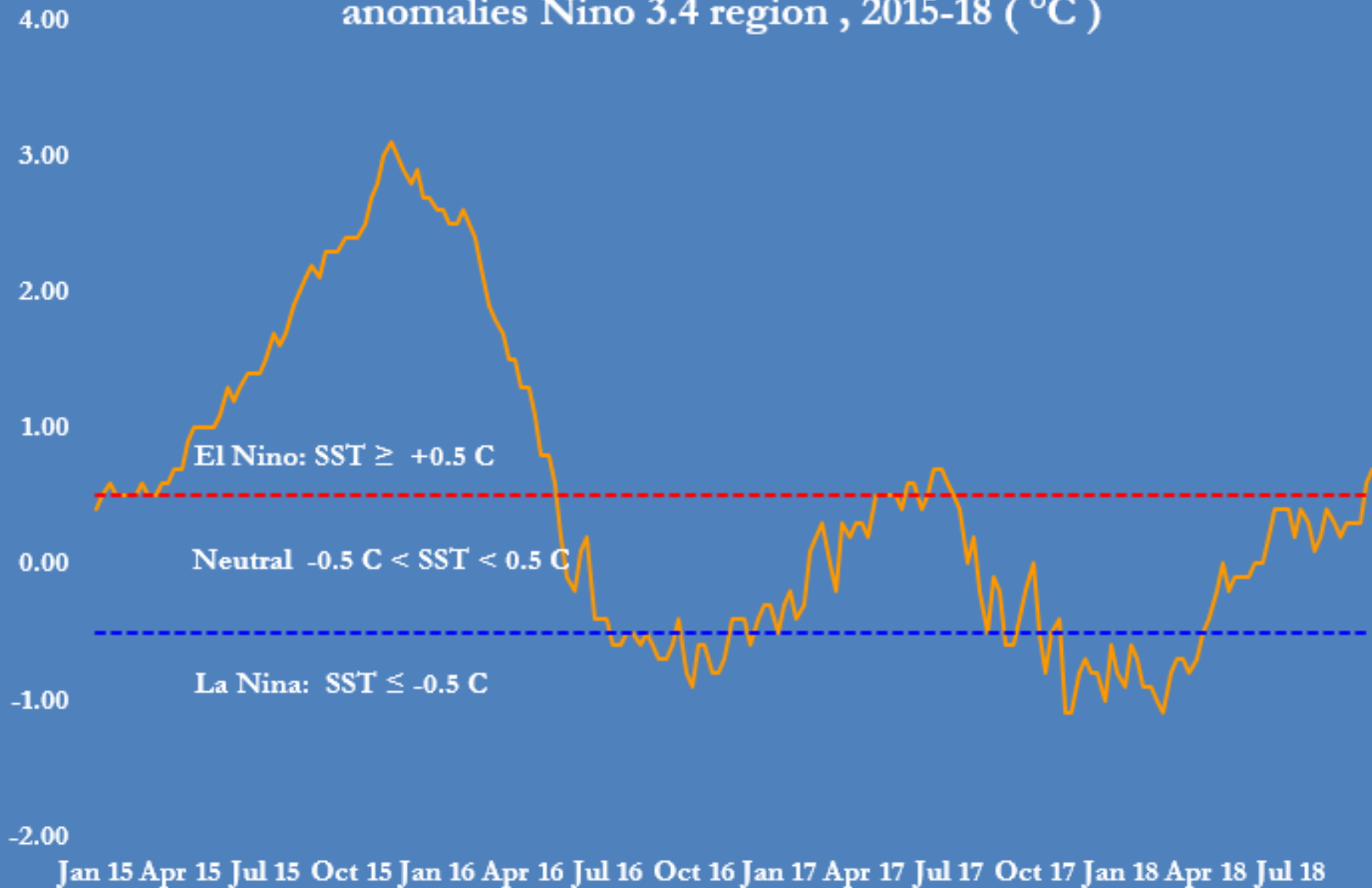


El Nino-Southern Oscillation

Selected indicators

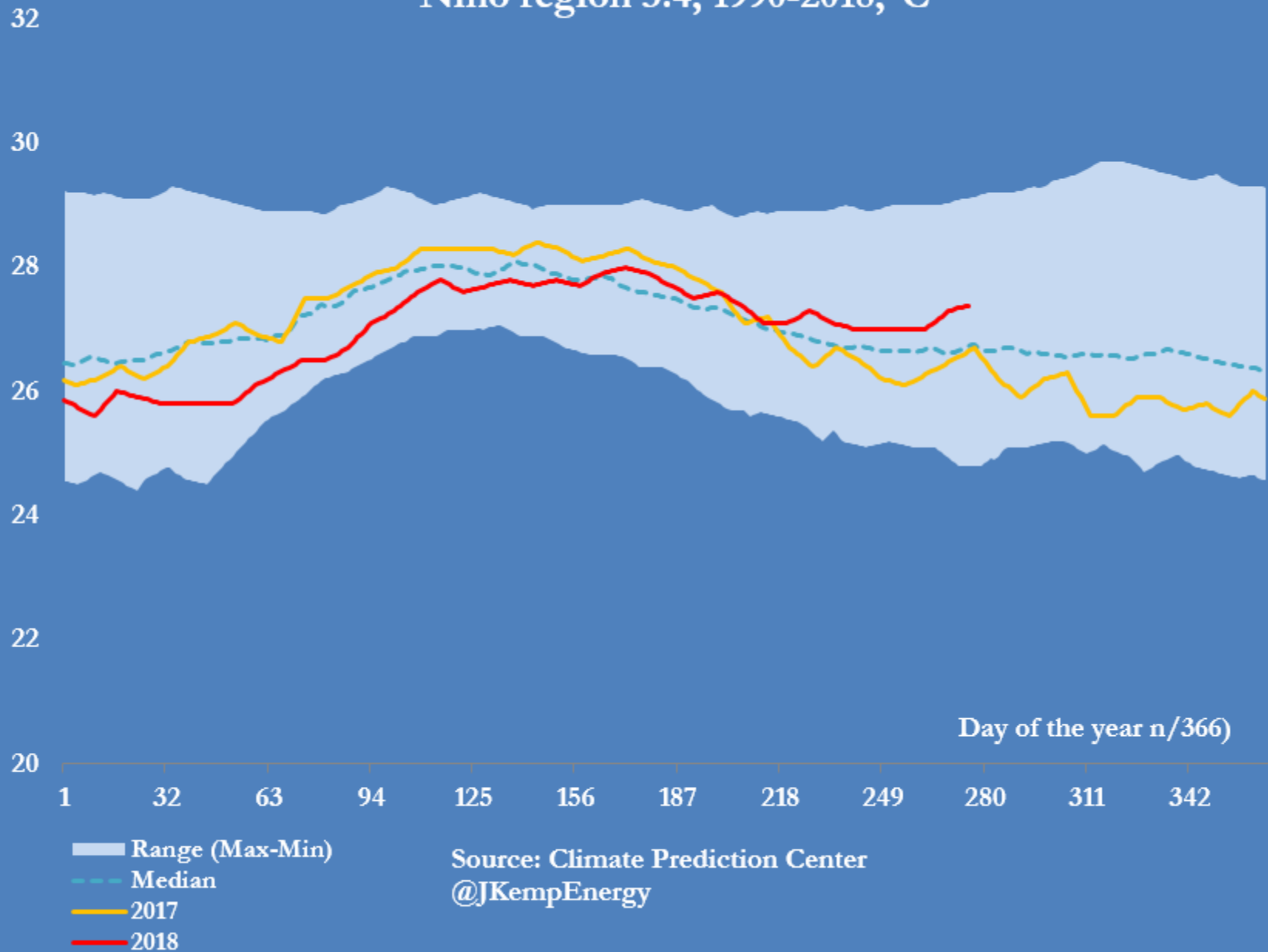
JOHN KEMP
REUTERS
10 Oct 2018

El Nino-Southern Oscillation: Sea surface temperature anomalies Nino 3.4 region , 2015-18 (°C)

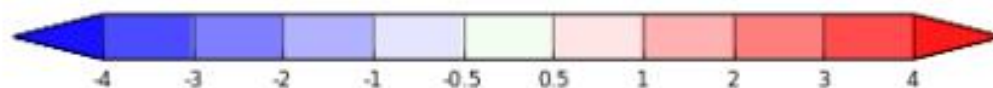
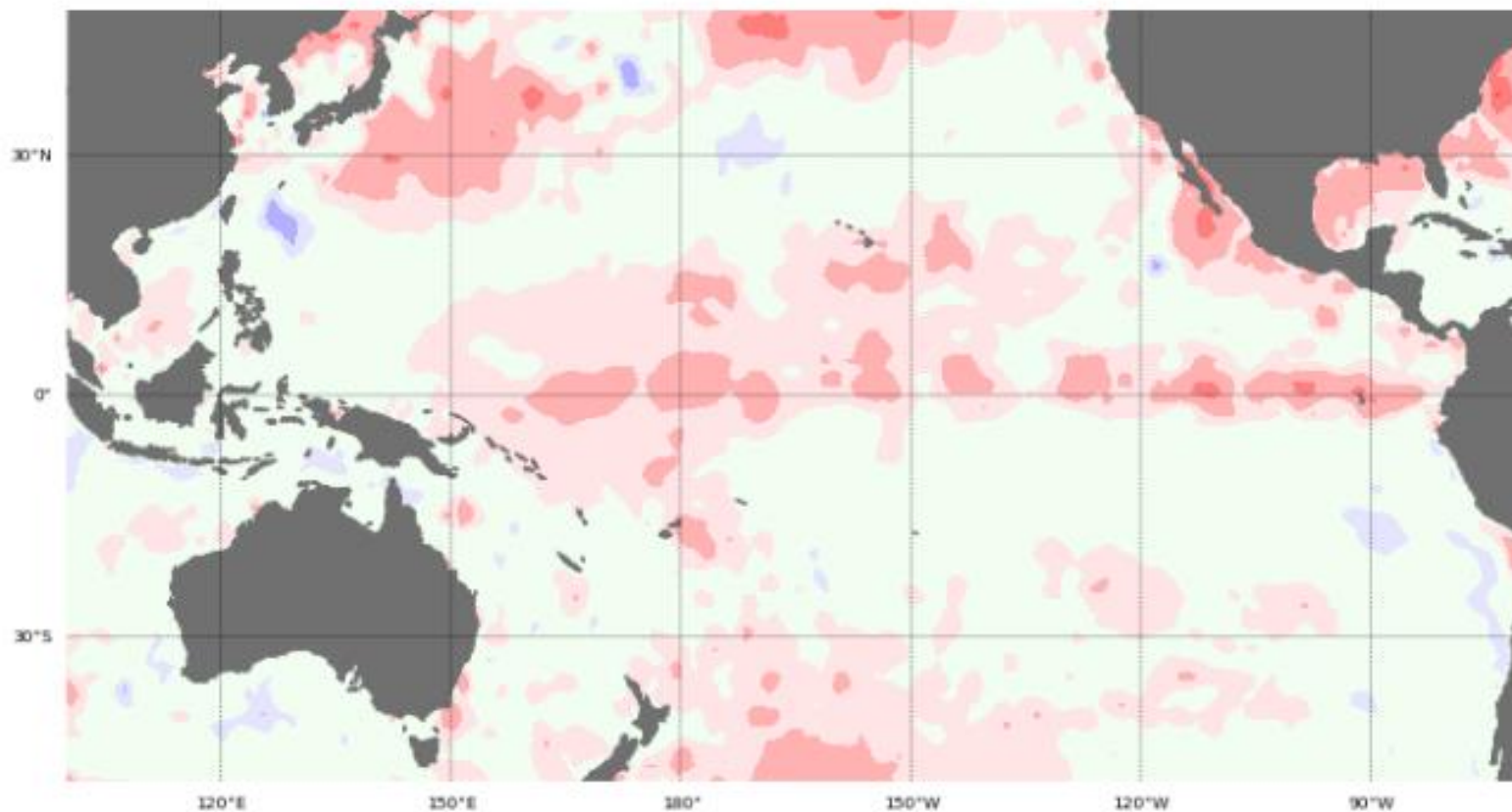


Source: US National Oceanic and Atmospheric Administration

Sea surface temperature in the central-eastern Pacific Nino region 3.4, 1990-2018, °C



Sea surface temperature anomaly: 01/10/2018 to 07/10/2018



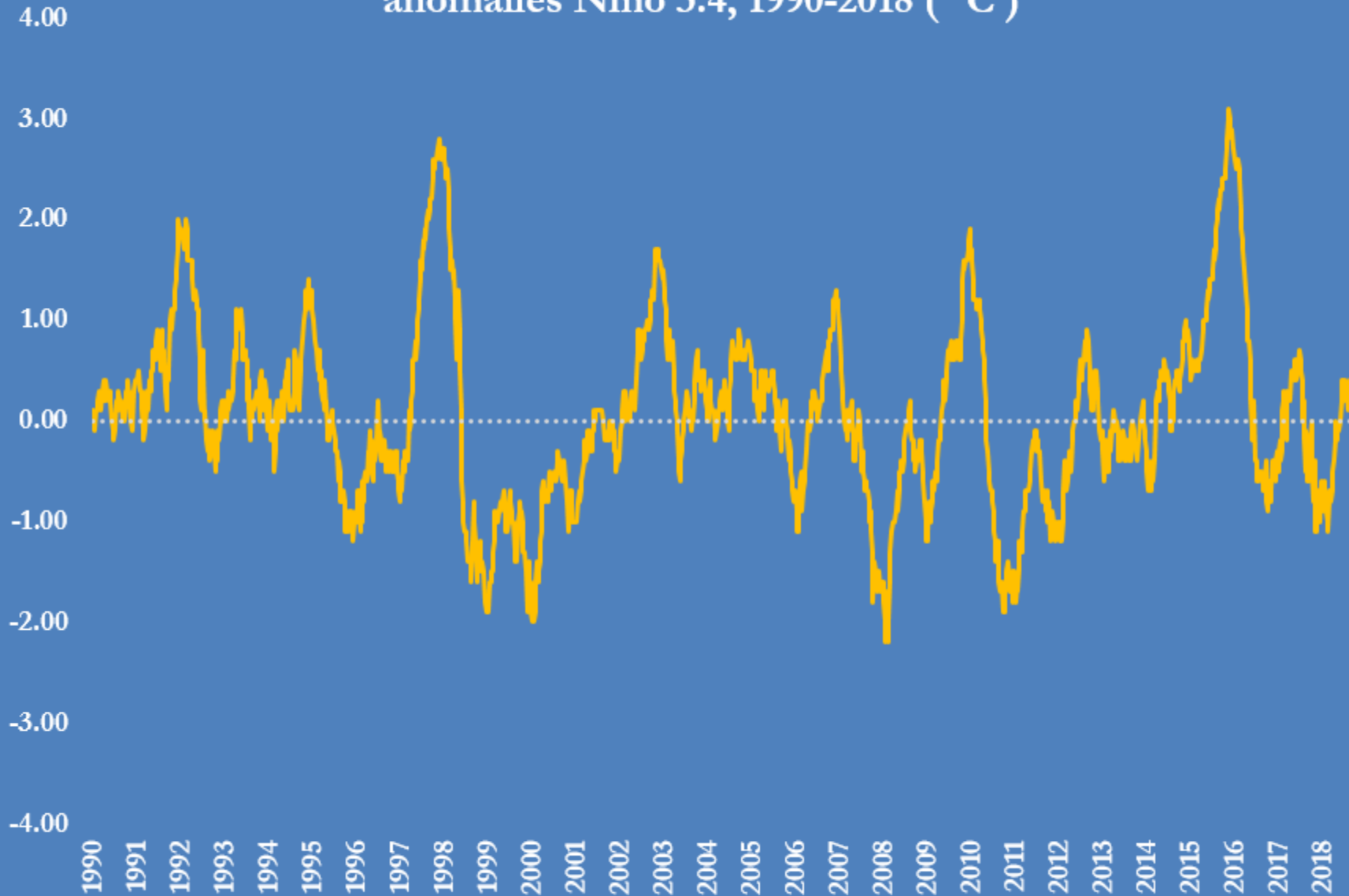
Data: ABOM BNOC
Climatology baseline: 1961 to 1990
© Commonwealth of Australia 2018, Australian Bureau of Meteorology

°C

<http://www.bom.gov.au/climate>

Week ending: 07/10/2018
Created: 08/10/2018

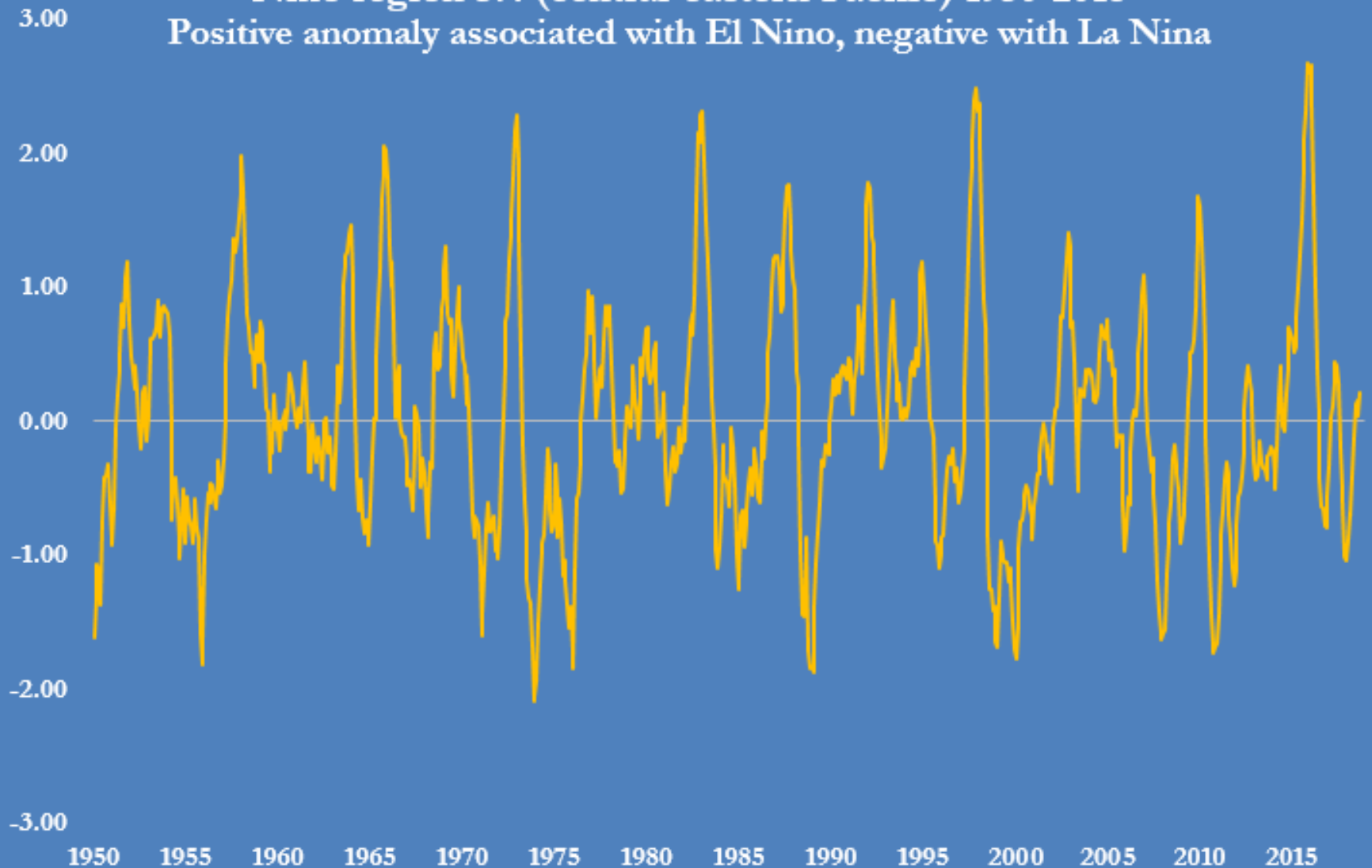
El Nino-Southern Oscillation: Sea surface temperature anomalies Nino 3.4, 1990-2018 (°C)



Source: US National Oceanic and Atmospheric Administration

@JKempEnergy

Pacific sea surface temperature anomaly
Nino region 3.4 (central-eastern Pacific) 1950-2018
Positive anomaly associated with El Nino, negative with La Nina



Source: Climate Prediction Center, US National Oceanic and Atmospheric Administration