

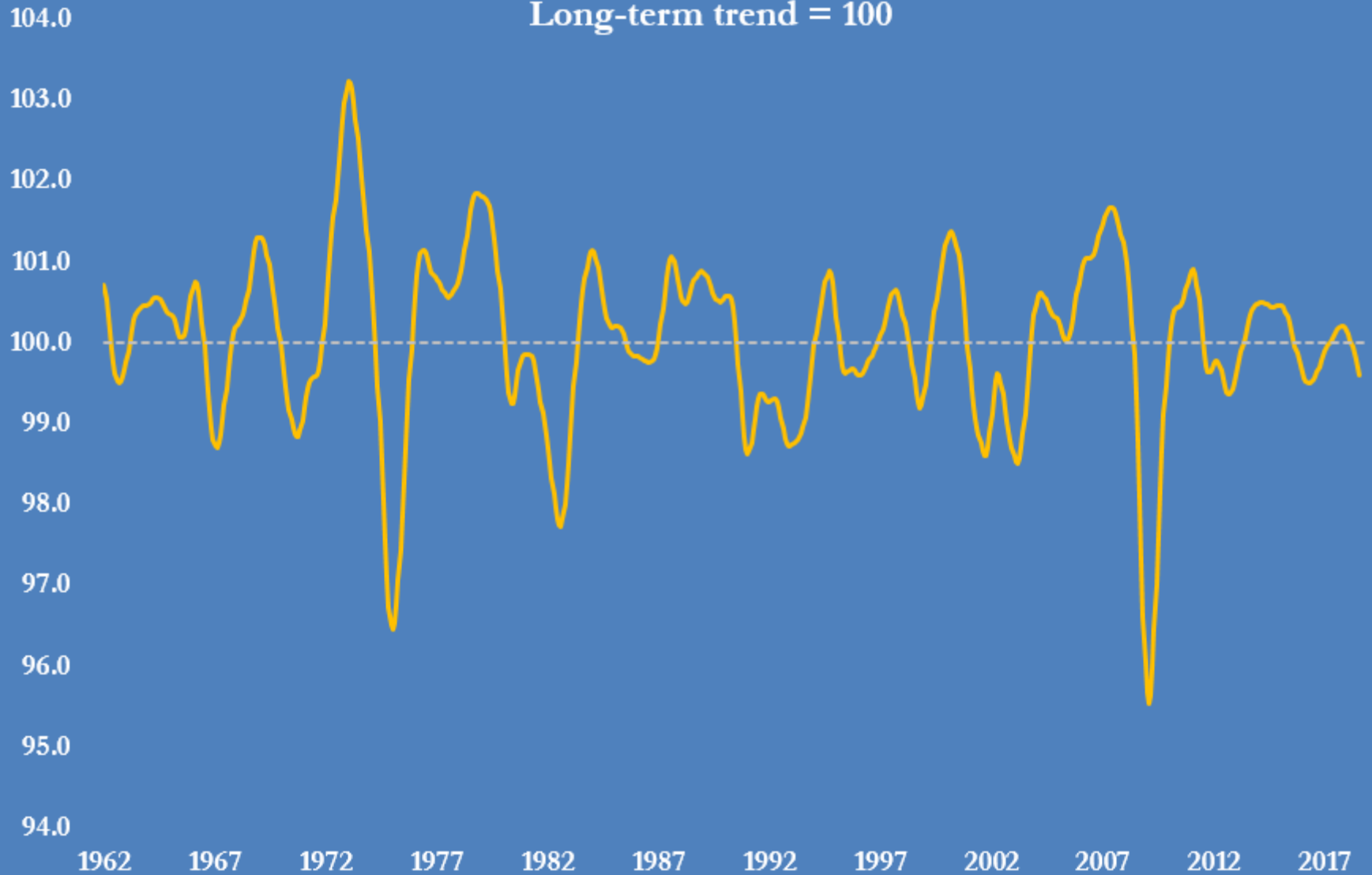
World economy

Selected indicators

JOHN KEMP
REUTERS
11 Oct 2018

OECD Composite Leading Indicator, 1962-2018

Long-term trend = 100



Source: OECD

@JKempEnergy

Volume of World Trade

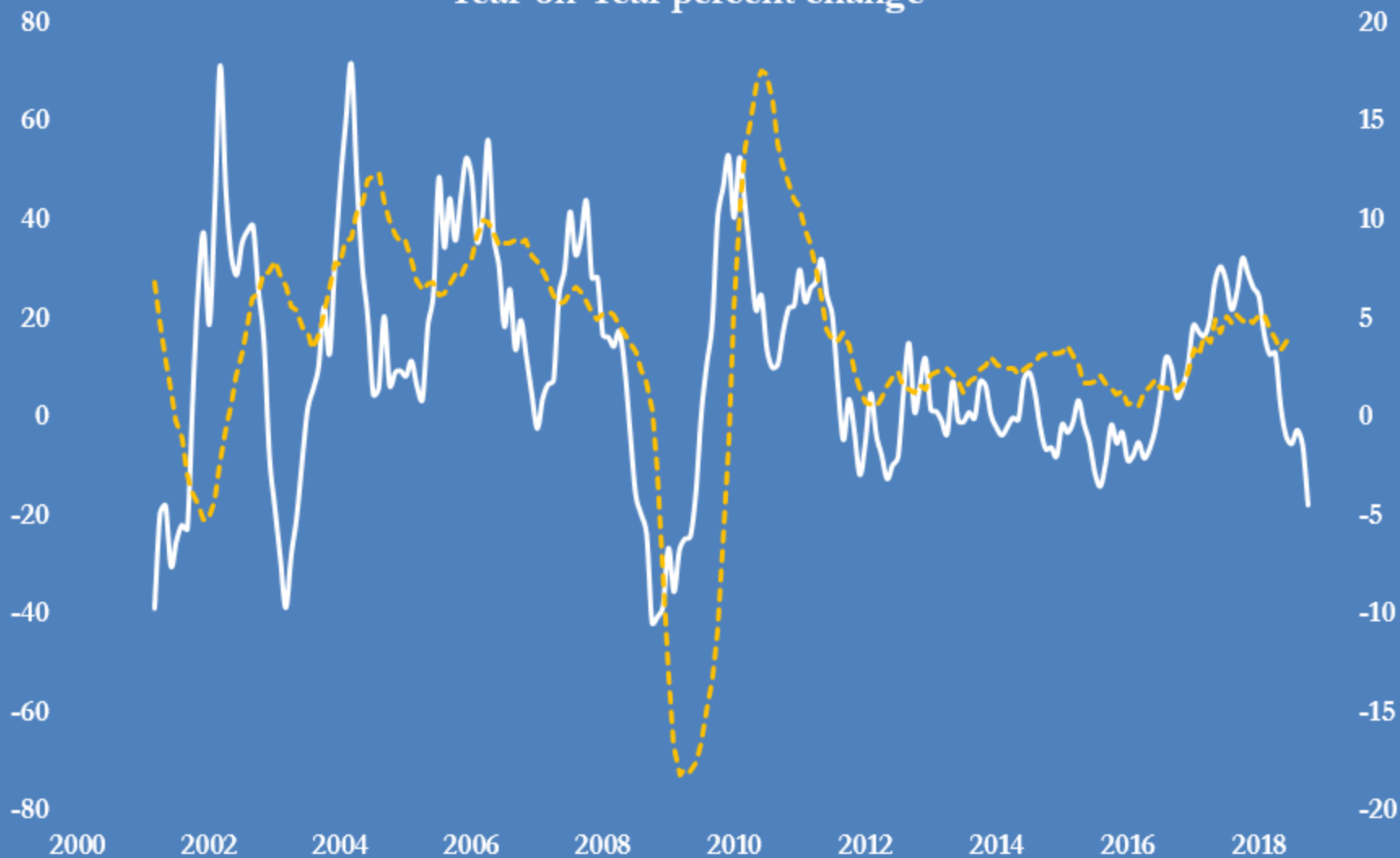
Year-on-year percent growth, 3-month average



Source: Netherlands Bureau for Economic Policy Analysis, *World Trade Monitor*

@JKempEnergy

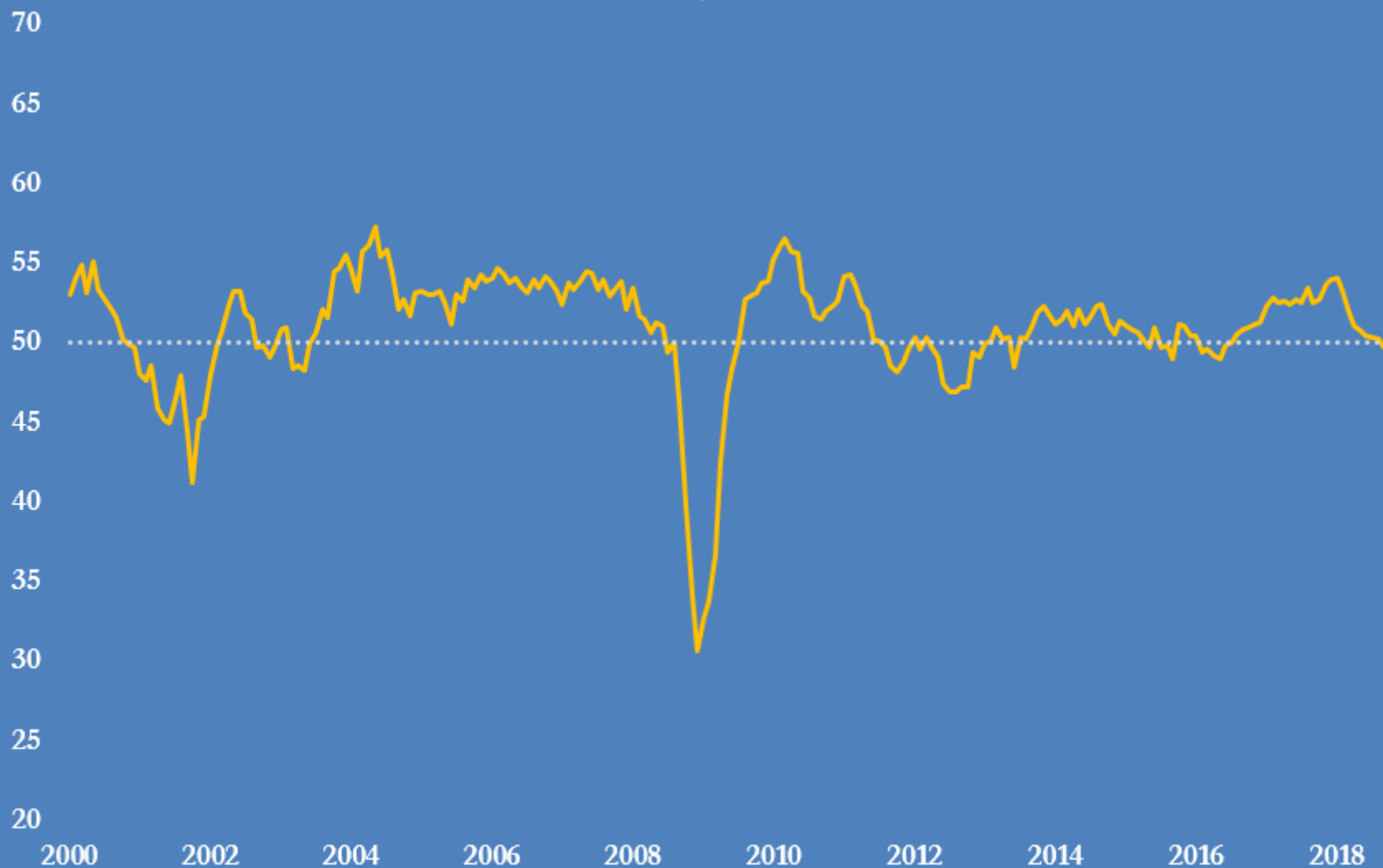
South Korea's KOSPI 100 equity index and world trade Year-on-Year percent change



— KOSPI 100 share index (YoY percent change) (left-axis)
- - - World trade volumes (YoY percent change) (right-axis)

Source: CPB, Thomson Reuters Eikon
@JKempEnergy

JPMorgan Global PMI New Export Orders Sub-index, 2000-2018

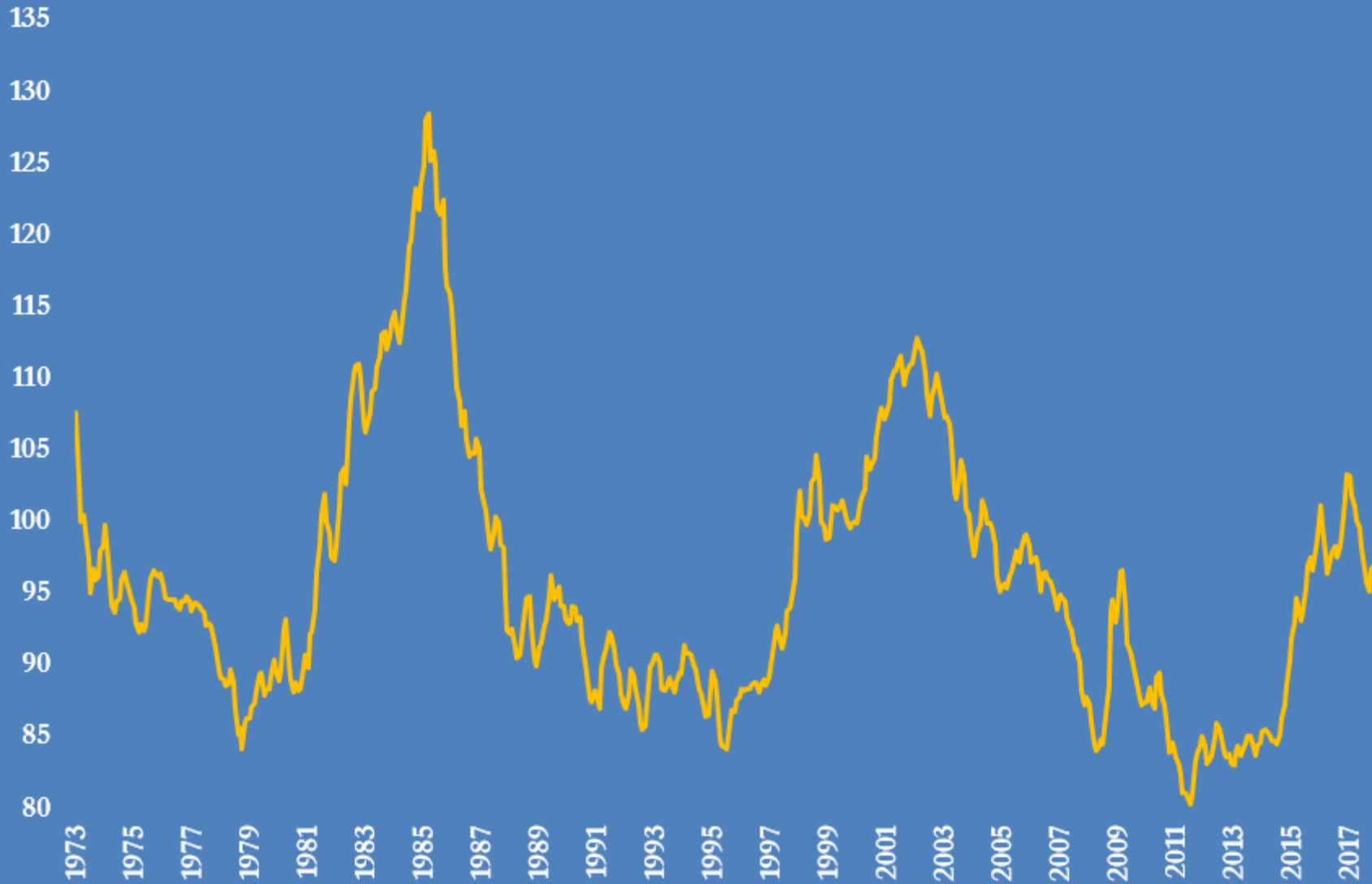


Source: Thomson Reuters Datastream

@JKempEnergy

U.S. dollar real exchange rate index, 1973-2018

Broad index, inflation-adjusted, trade-weighted major trading partners



Source: Board of Governors of the Federal Reserve System

@JKempEnergy