

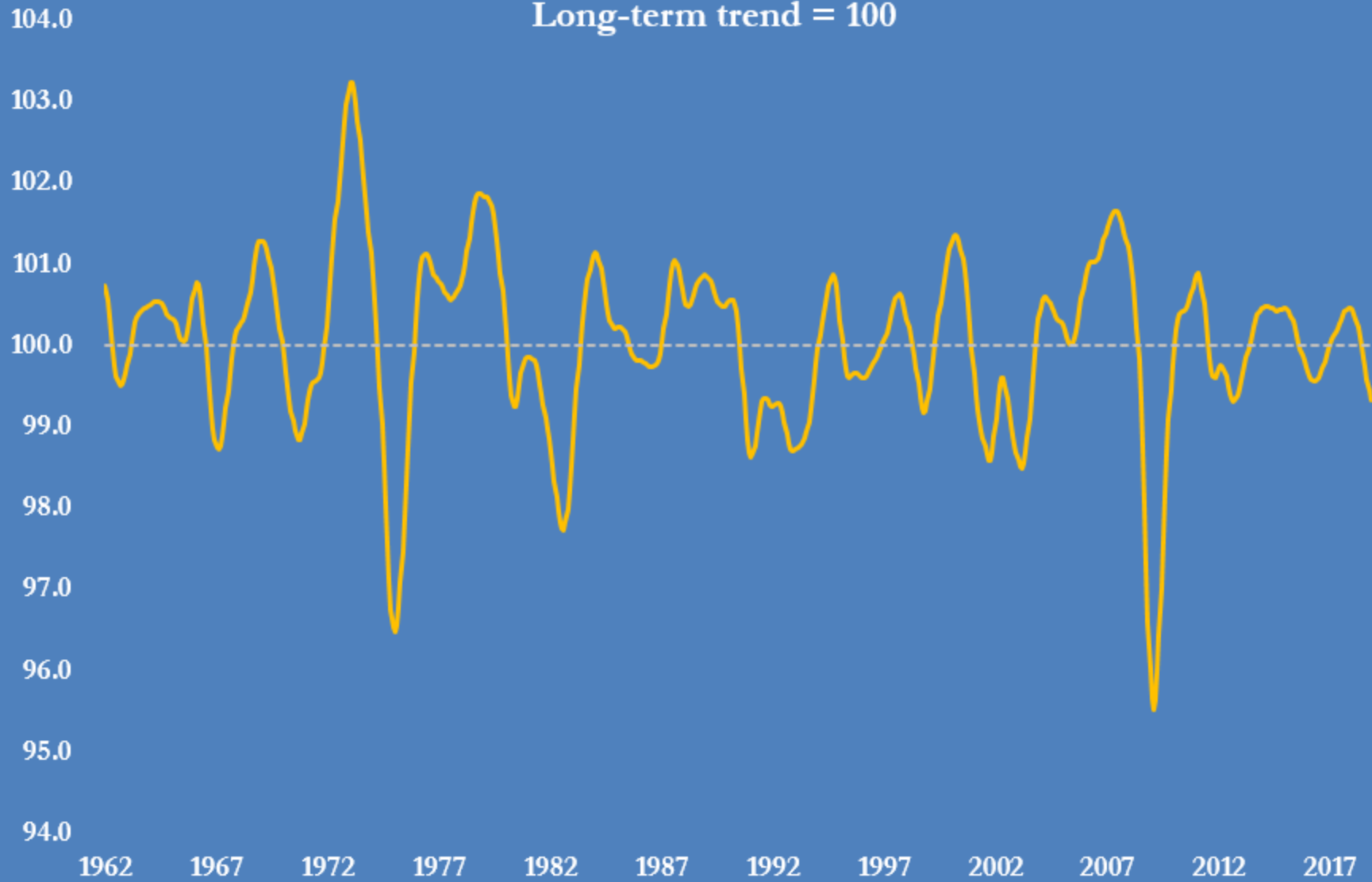
Global economy

Selected indicators

JOHN KEMP
REUTERS
16 Jan 2019

OECD Composite Leading Indicator, 1962-2018

Long-term trend = 100

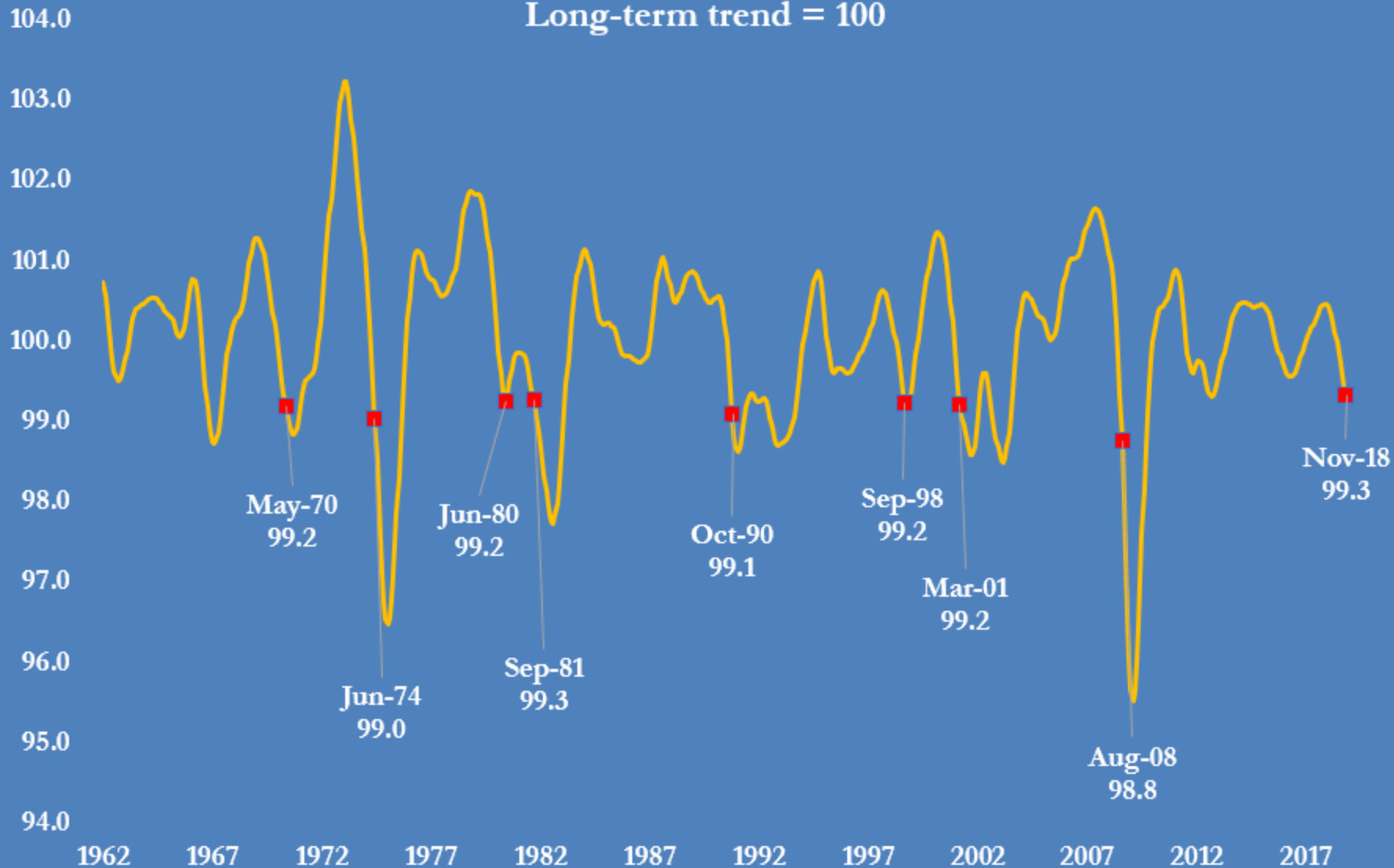


Source: OECD

@JKempEnergy

OECD Composite Leading Indicator, 1962-2018

Long-term trend = 100



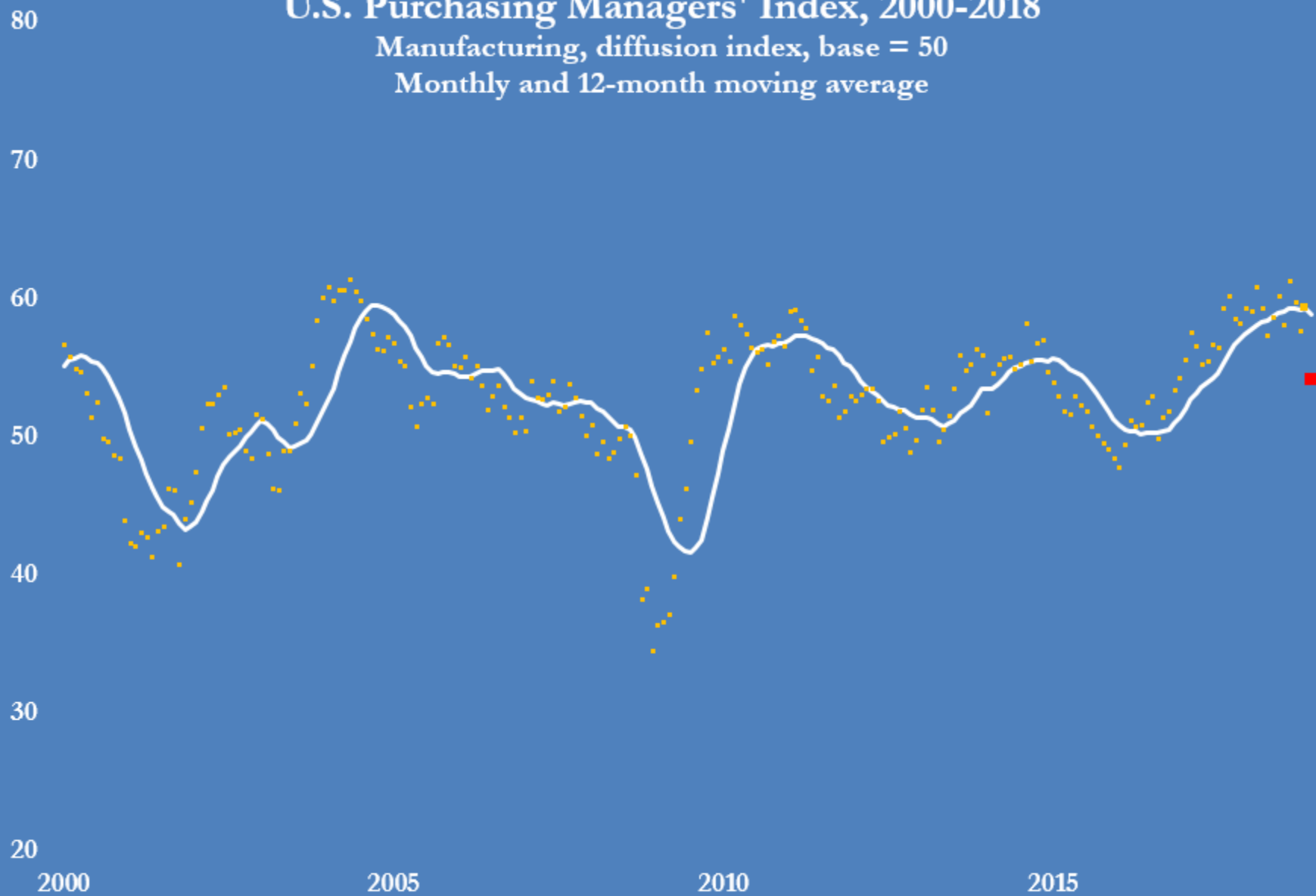
Source: OECD

@JKempEnergy

U.S. Purchasing Managers' Index, 2000-2018

Manufacturing, diffusion index, base = 50

Monthly and 12-month moving average

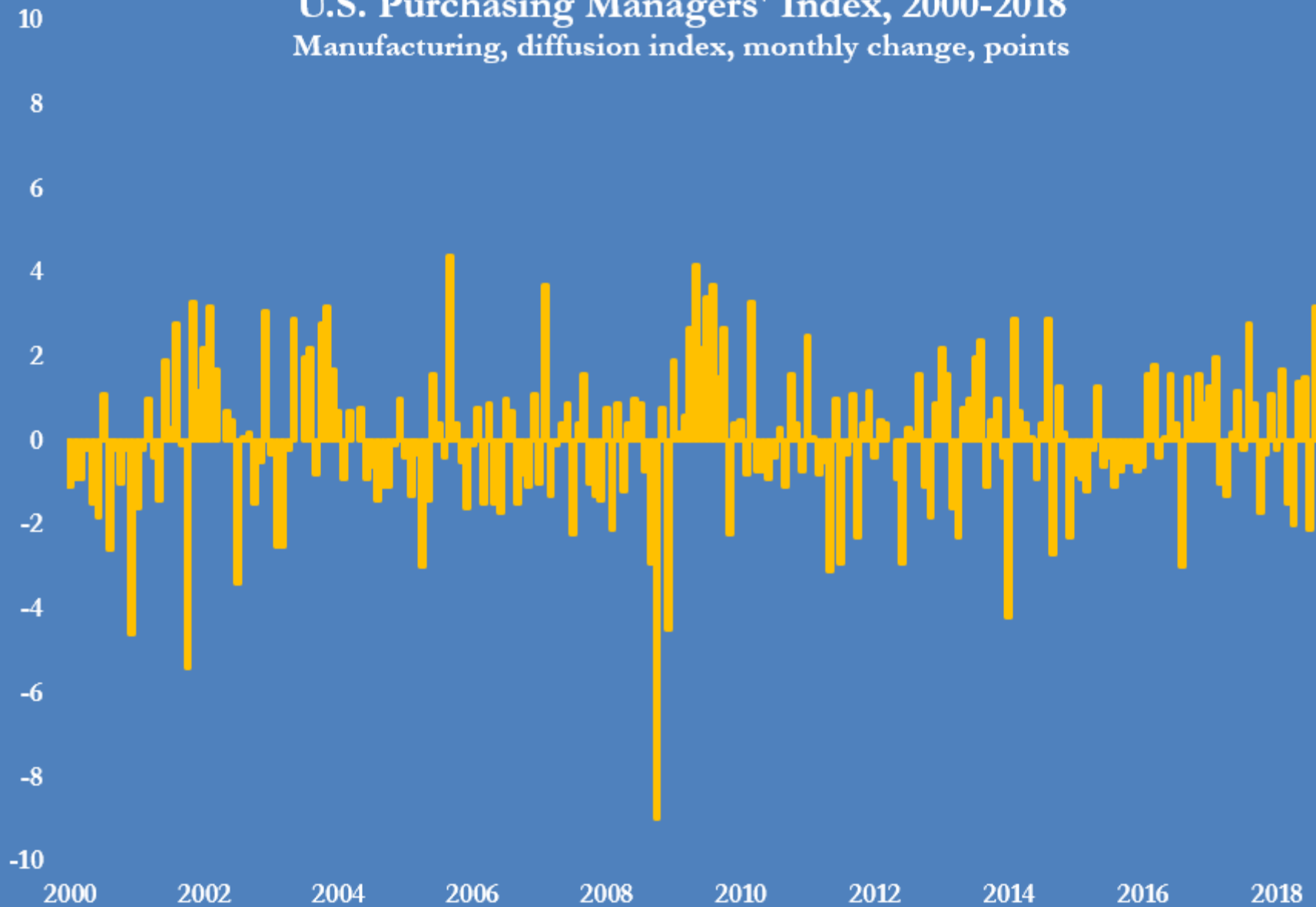


Source: Institute for Supply Management, *Manufacturing Report on Business*

@JKempEnergy

U.S. Purchasing Managers' Index, 2000-2018

Manufacturing, diffusion index, monthly change, points

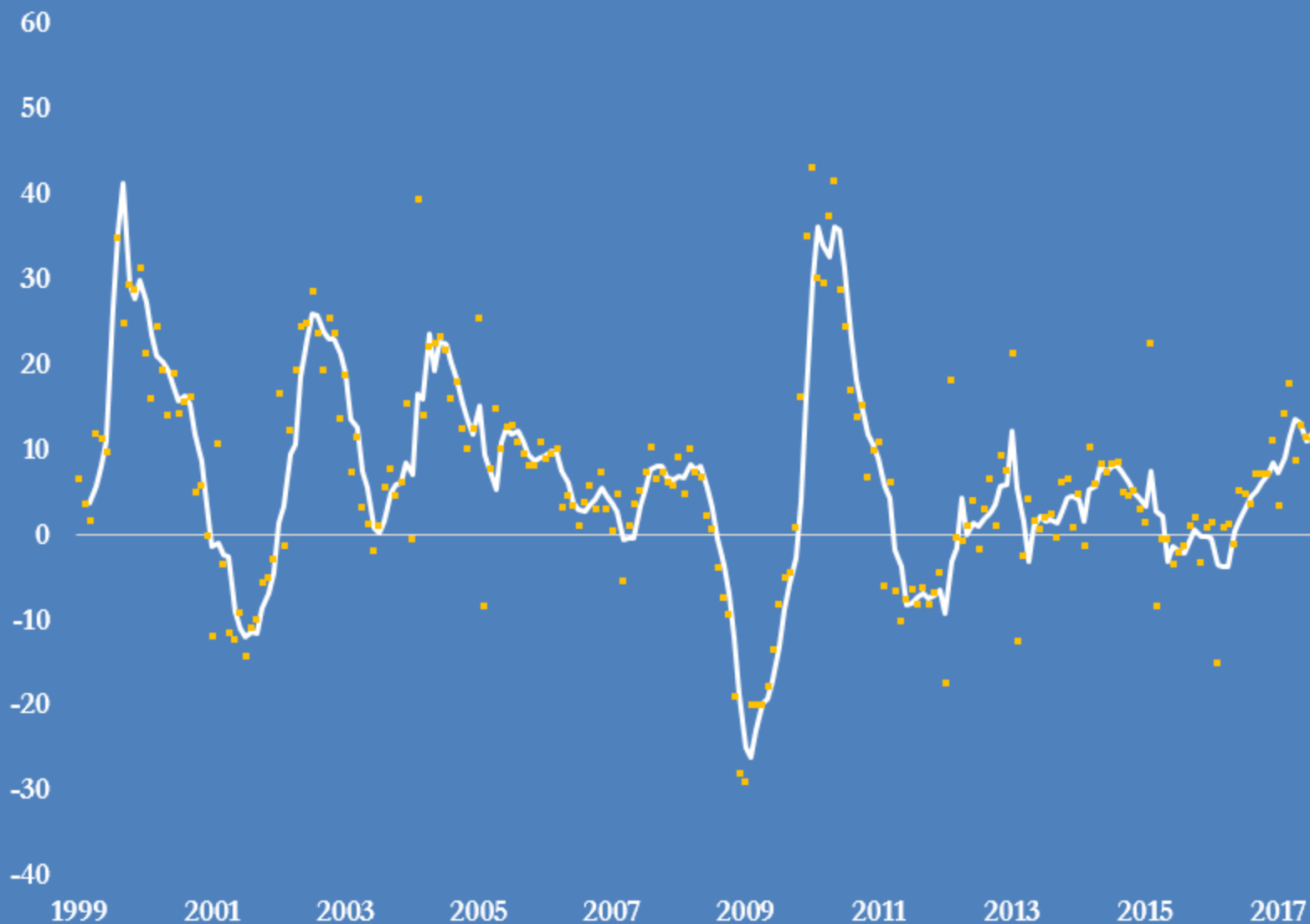


Source: Institute for Supply Management, *Manufacturing Report on Business*

@JKempEnergy

Hong Kong air freight volume, 1998-2018

Percent change compared with prior year, monthly and 3-month average



Source: Civil Aviation Department of Hong Kong Special Administrative Region
@JKempEnergy