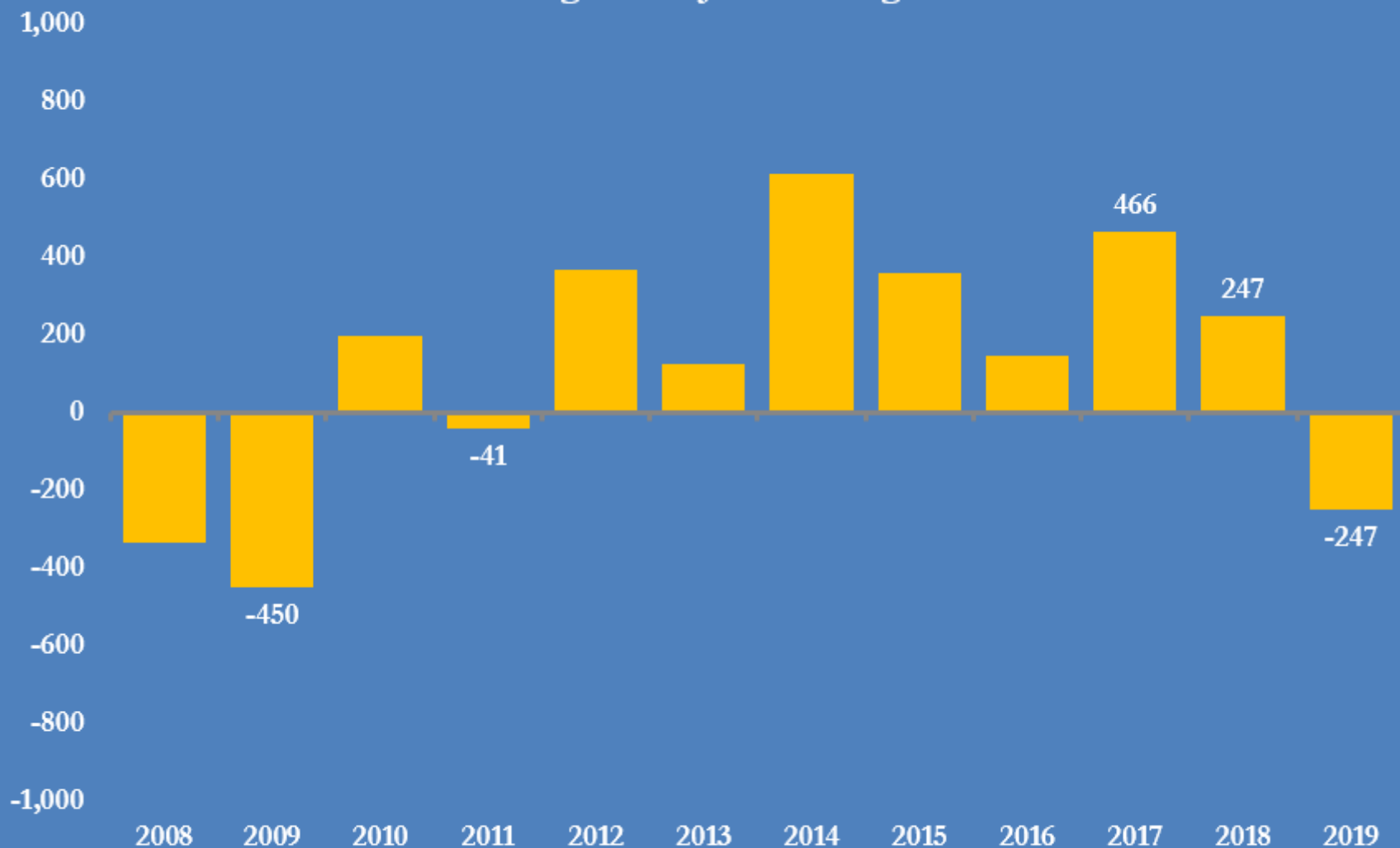


U.S. refinery crude processing

Selected indicators

JOHN KEMP
REUTERS
22 August 2019

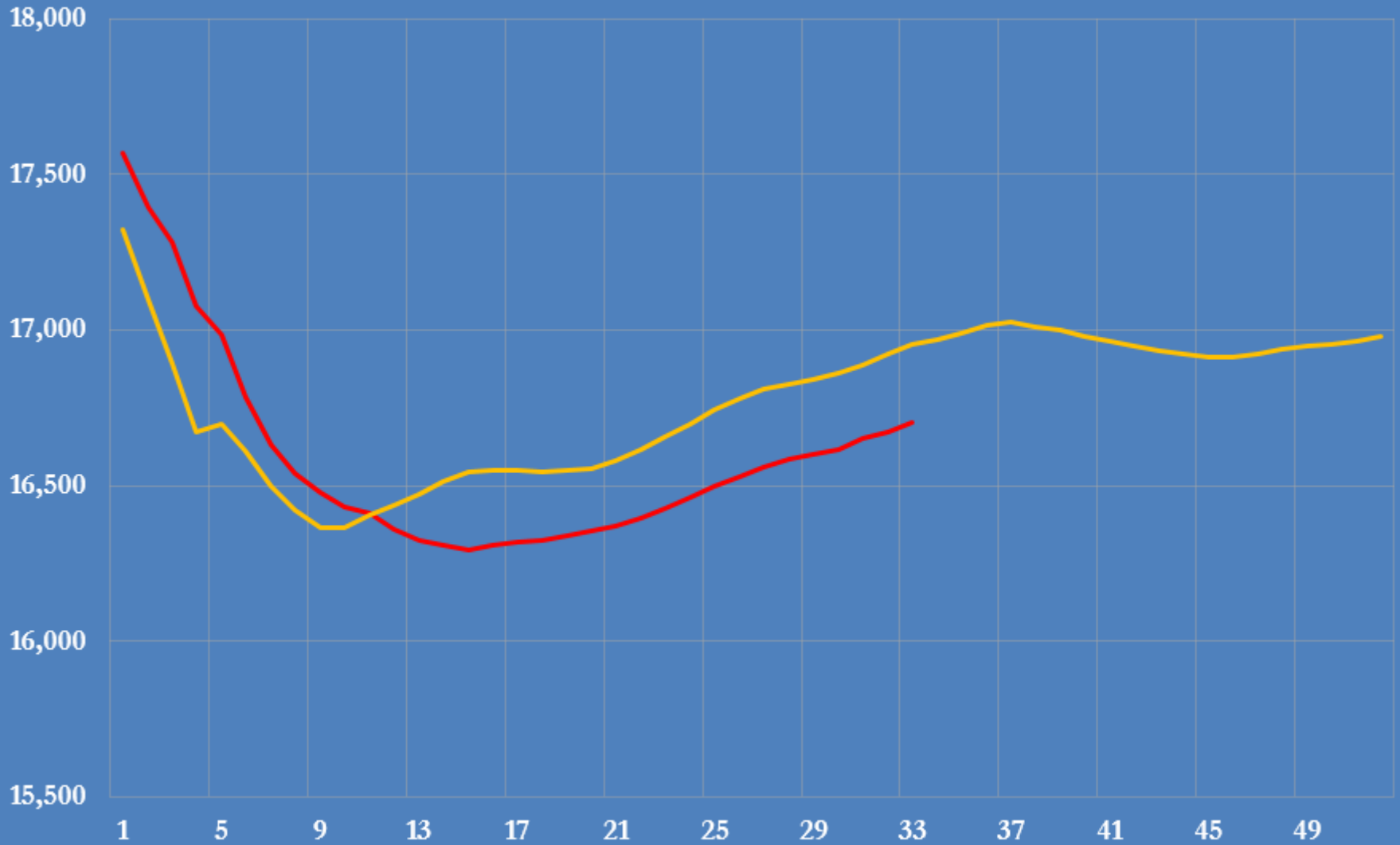
**U.S. refinery throughput (net input of crude oil)
change from prior year, thousand barrels per day
average from Jan 1 to Aug 16**



Source: *Weekly Petroleum Status Report*, U.S. Energy Information Administration
@JKempEnergy

U.S. refinery crude processing

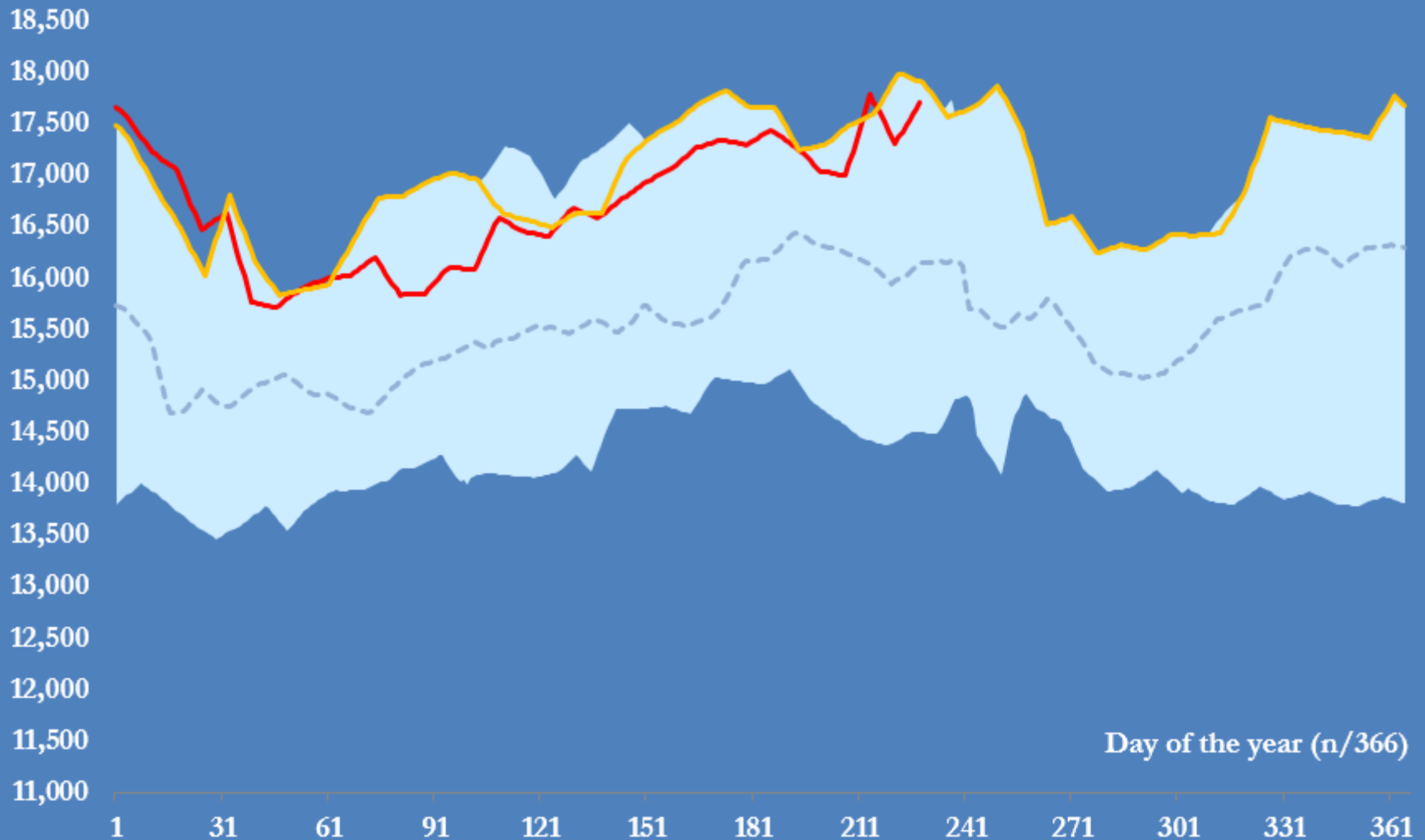
Year-to-date, average, 000 b/d



— 2019
— 2018

Source: U.S. Energy Information Administration
@JKempEnergy

U.S. refinery throughput (net input of crude oil) 000 b/d



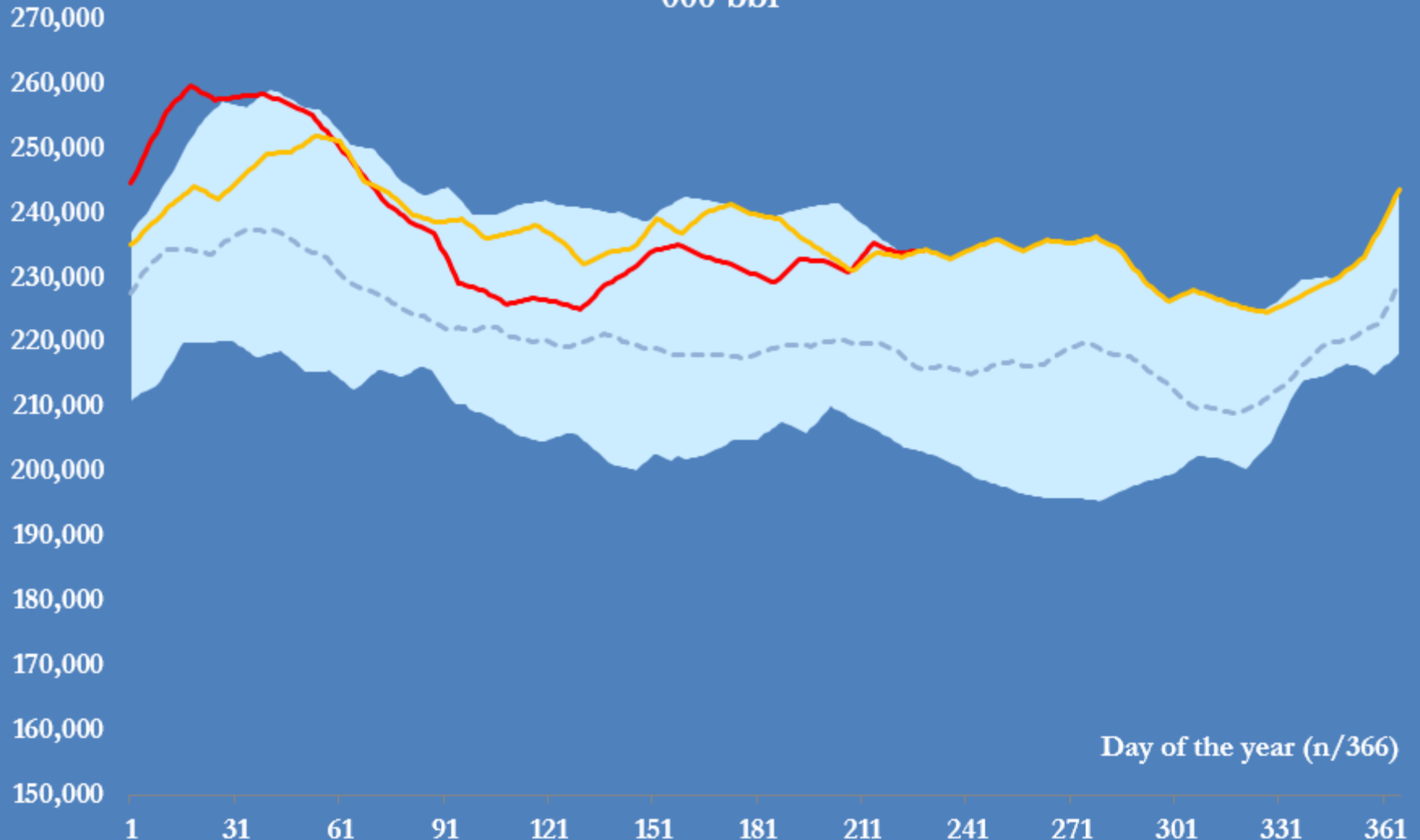
- 10-yr range (max-min)
- 10-yr median
- 2019
- 2018

Source: *Weekly Petroleum Status Report*, U.S. Energy Information Administration

@JKempEnergy

Gasoline stocks in the United States

000 bbl



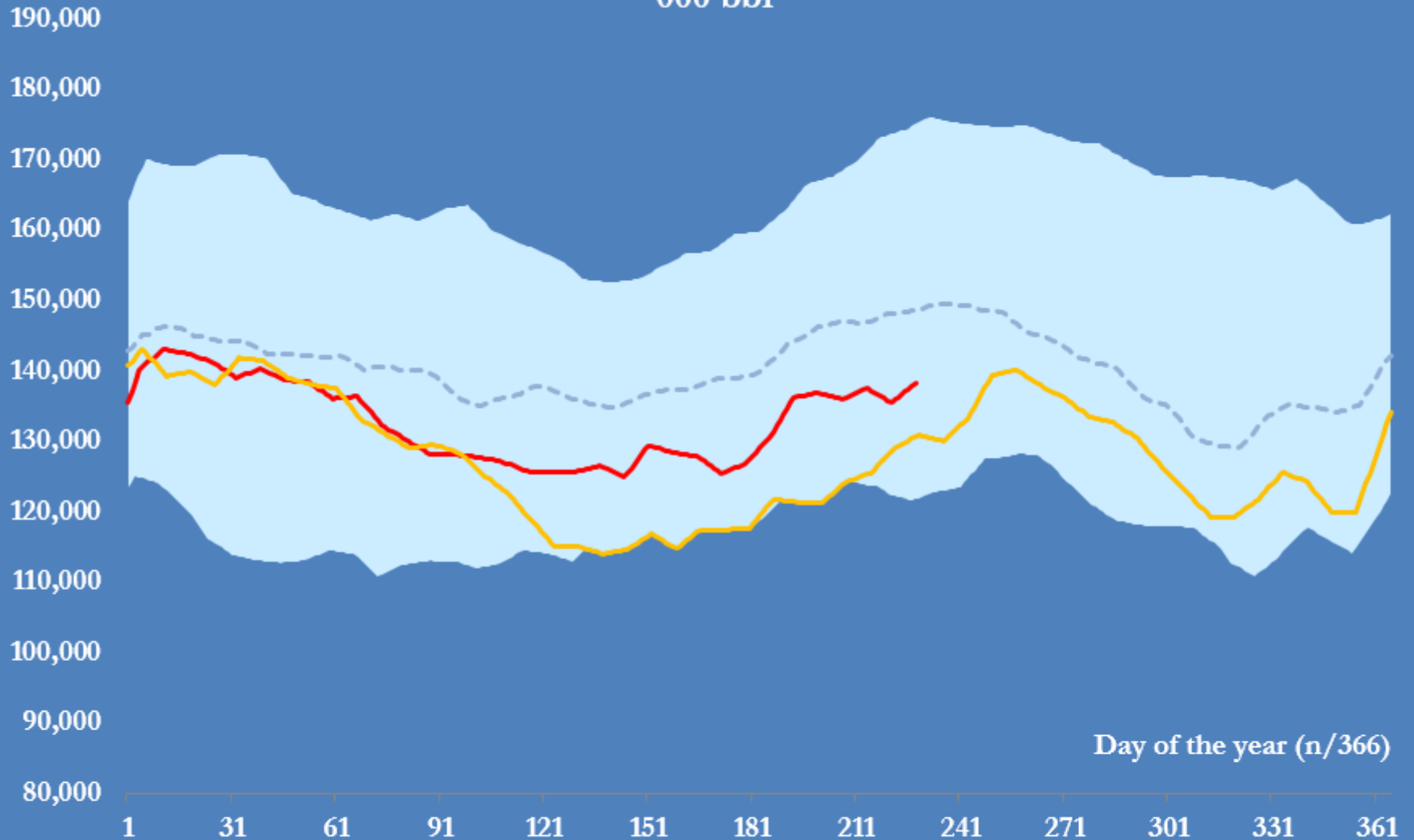
■ 10-yr range (max-min)
--- 10-yr median
— 2019
— 2018

Source: *Weekly Petroleum Status Report*, U.S. Energy Information Administration

@JKempEnergy

Distillate fuel oil stocks in the United States

000 bbl



- 10-yr range (max-min)
- 10-yr median
- 2019
- 2018

Source: *Weekly Petroleum Status Report*, U.S. Energy Information Administration

@JKempEnergy