

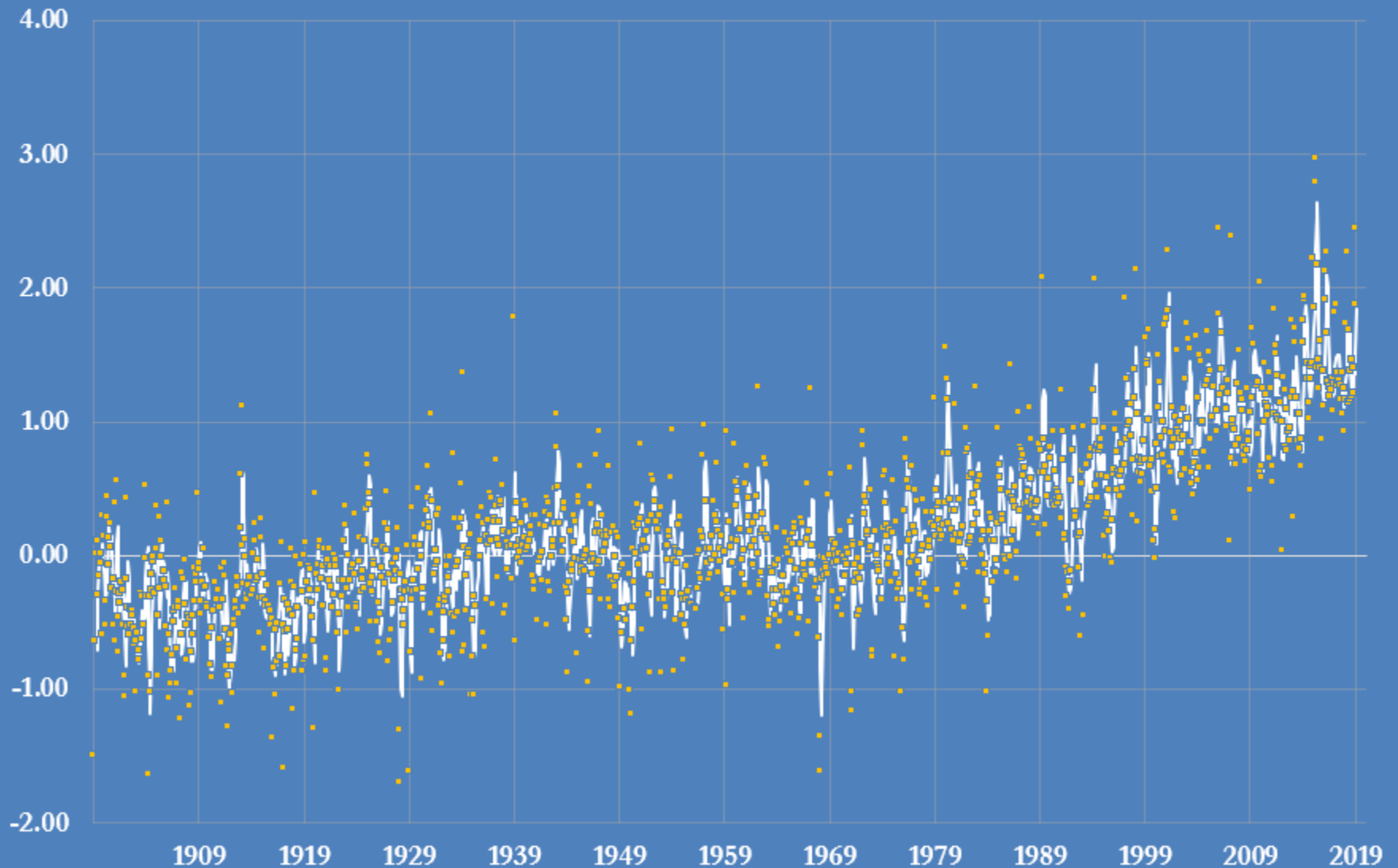
Global heating demand for winter 2019/20

Selected indicators

JOHN KEMP
REUTERS
14 Feb 2020

Northern Hemisphere land temperature anomaly, 1900-2020

degrees Celsius, monthly and three-month average
monthly deviation from 1910-2000 seasonal average

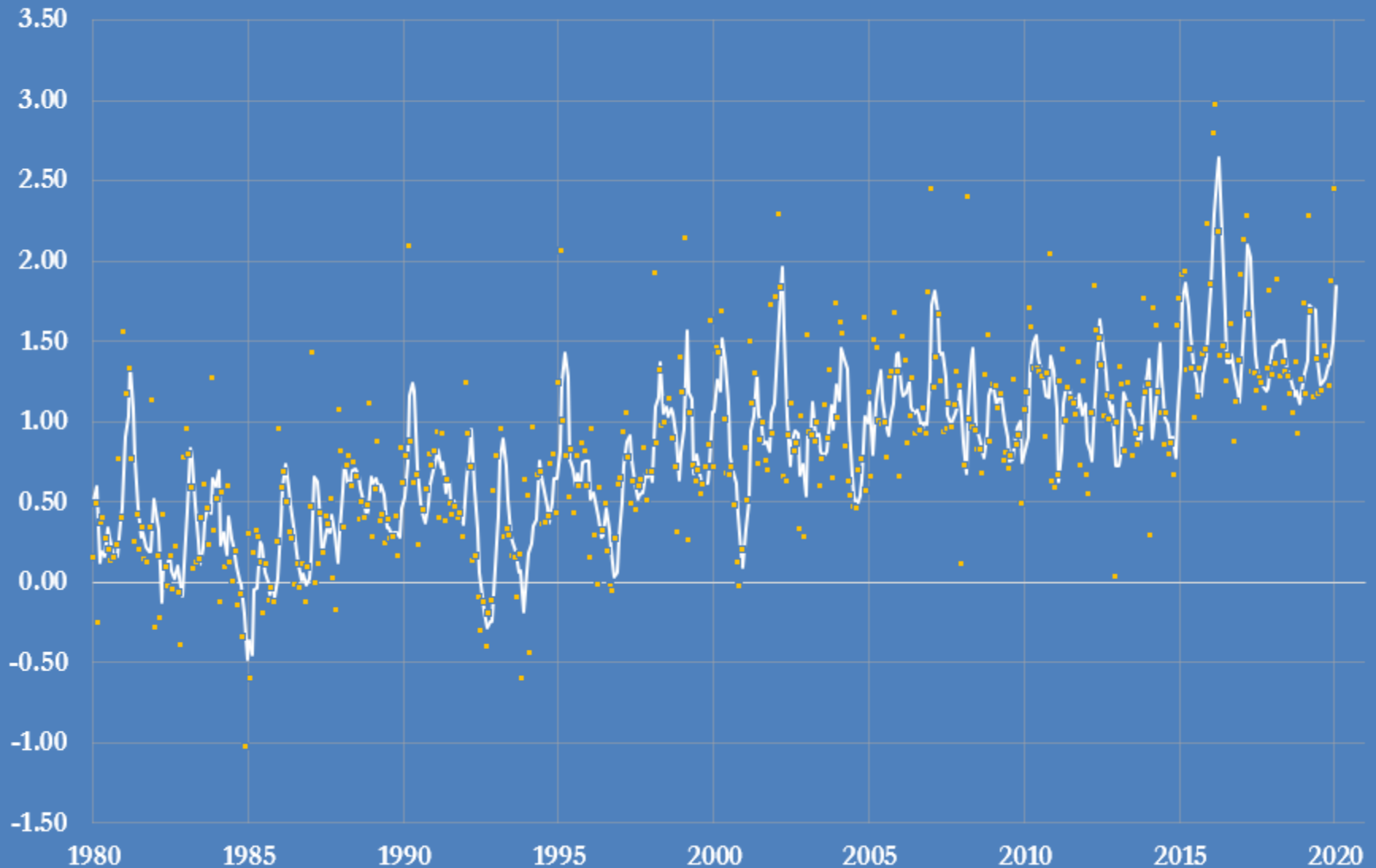


Source: U.S. National Centers for Environmental Information (NOAA)

@JKempEnergy

Northern Hemisphere land temperature anomaly, 1980-2020

degrees Celsius, monthly and three-month average
monthly deviation from 1910-2000 seasonal average

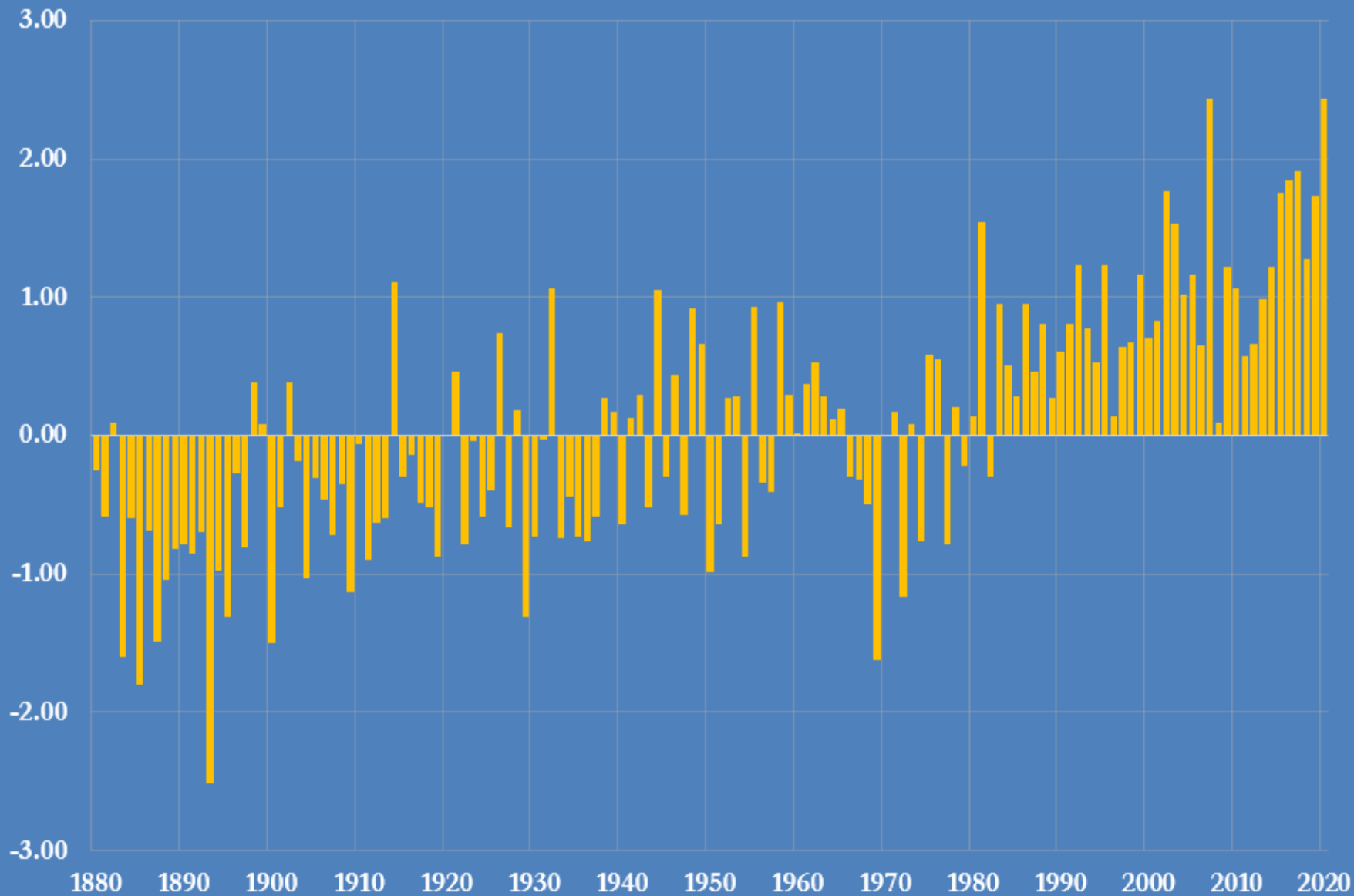


Source: U.S. National Centers for Environmental Information (NOAA)

@JKempEnergy

Northern hemisphere land temperature anomaly, 1880-2020

month of Jan each year, deviation from average for 1901-2000, degrees Celsius

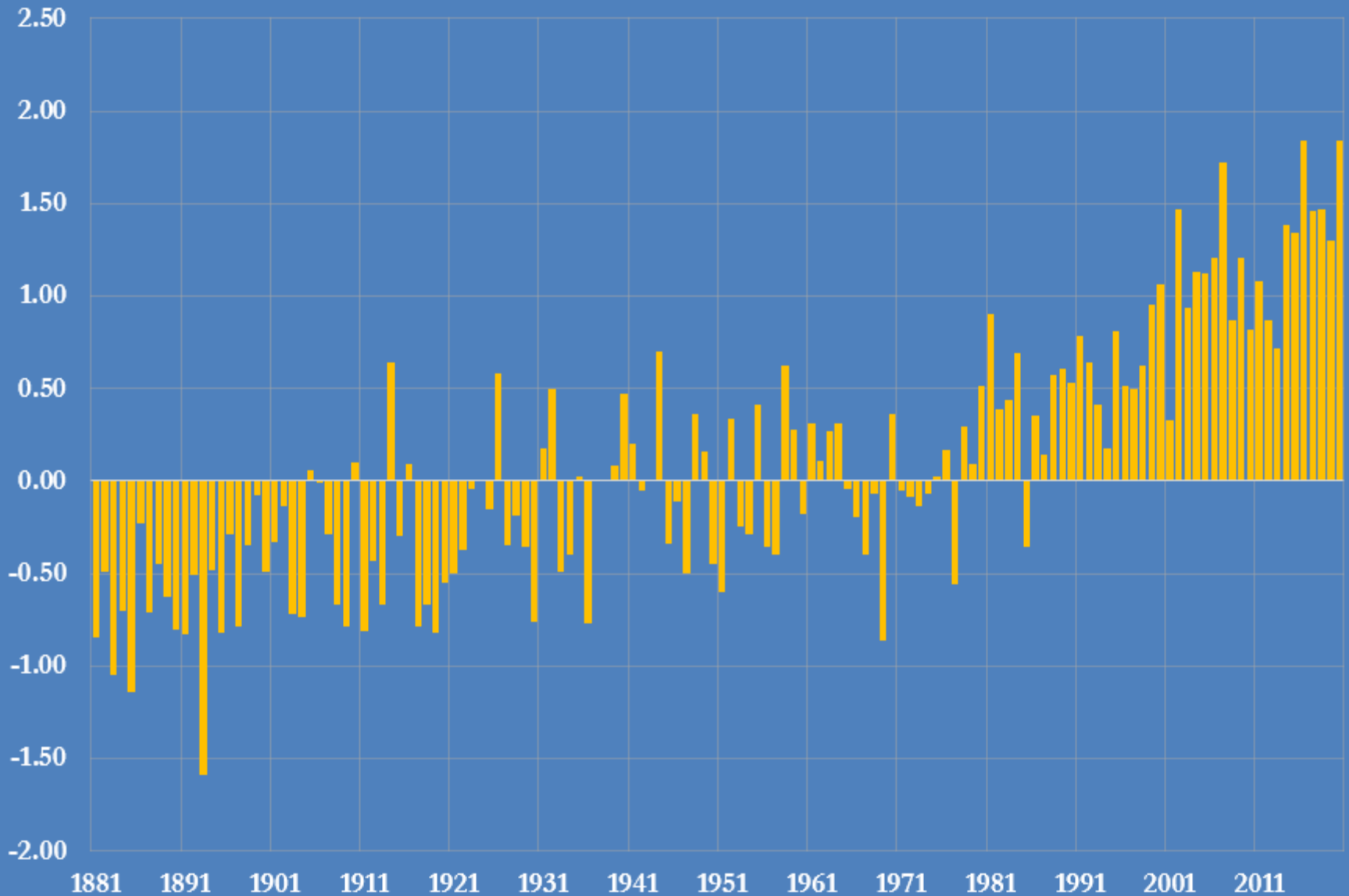


Source: U.S. National Centers for Environmental Information (NOAA)

@JKempEnergy

Northern hemisphere land temperature anomaly, 1881-2020

average for Nov-Jan, deviation from average for 1901-2000, degrees Celsius



Source: U.S. National Centers for Environmental Information (NOAA)

@JKempEnergy