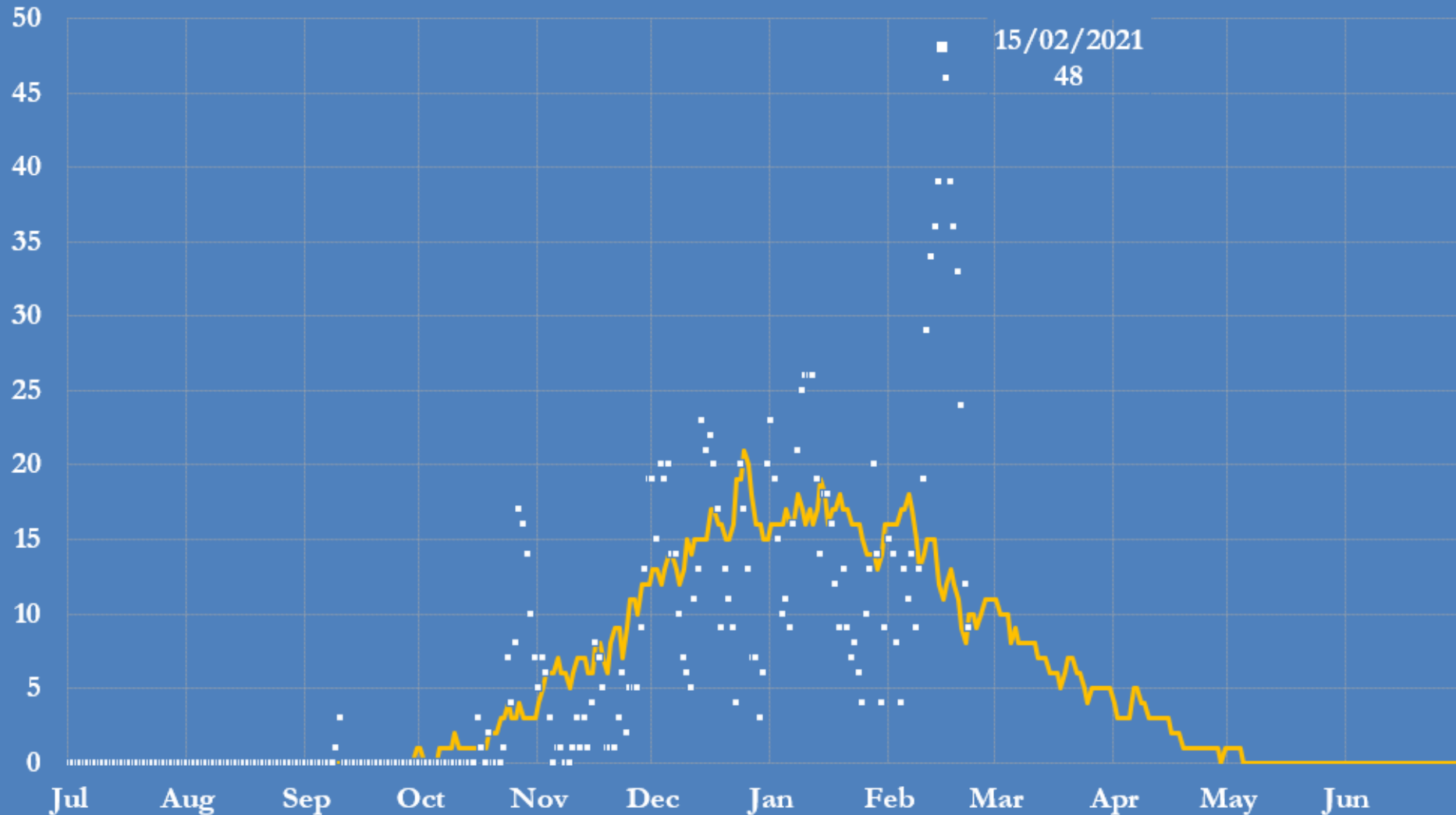


# Texas temperatures and electric reliability

## Selected indicators

**JOHN KEMP**  
**REUTERS**  
24 Feb 2021

# Texas heating demand: daily population-weighted heating degree days in 2020/21 versus the long-term average

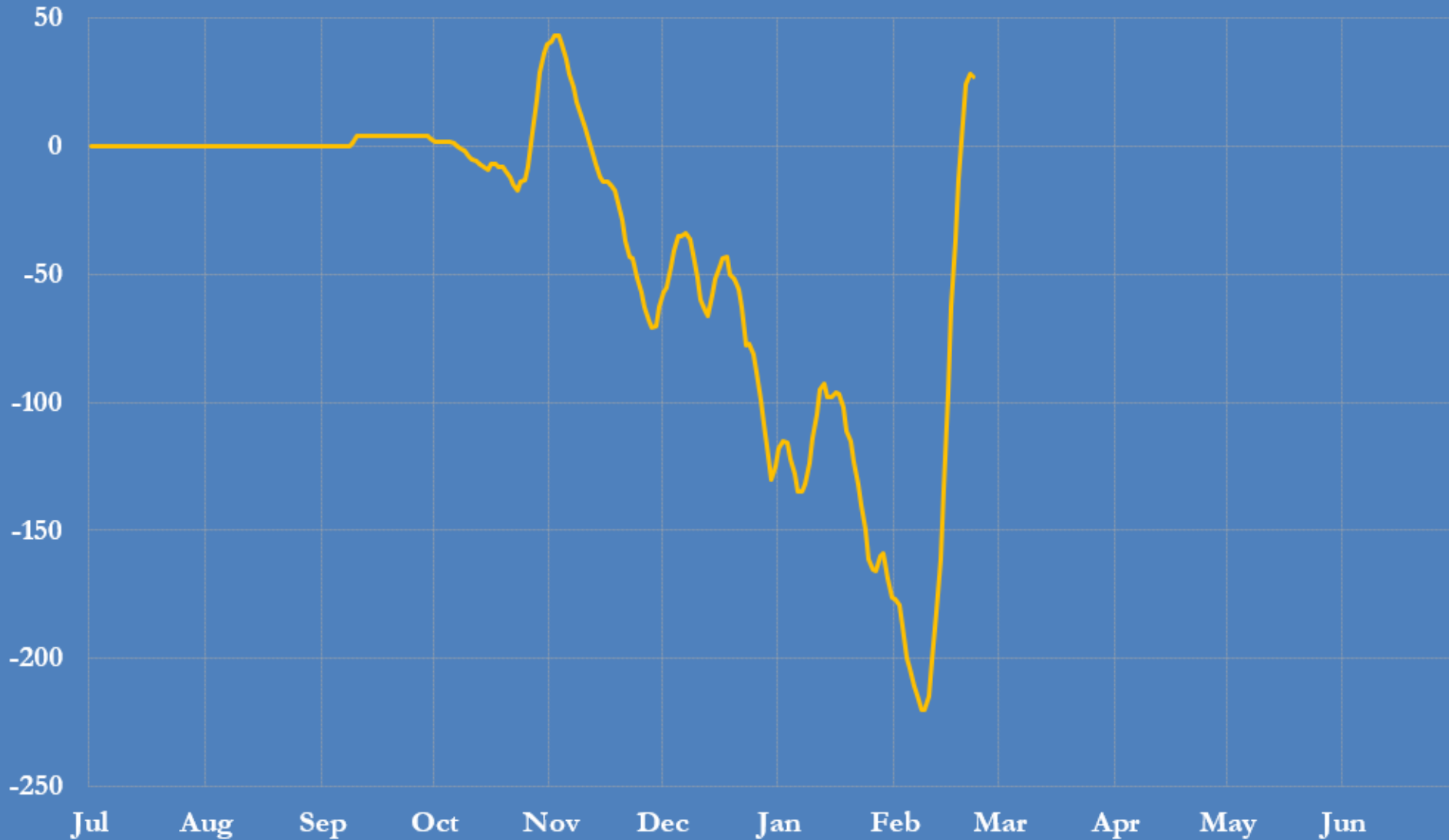


— Long-run average (1981-2010)

• Heating Year 2020/21 (July-Jun)

Source: Climate Prediction Center, U.S. National Oceanic and Atmospheric Administration; @JKempEnergy

# Texas heating demand: cumulative deviation from normal since July 1, 2020 (heating degree days, population-weighted)

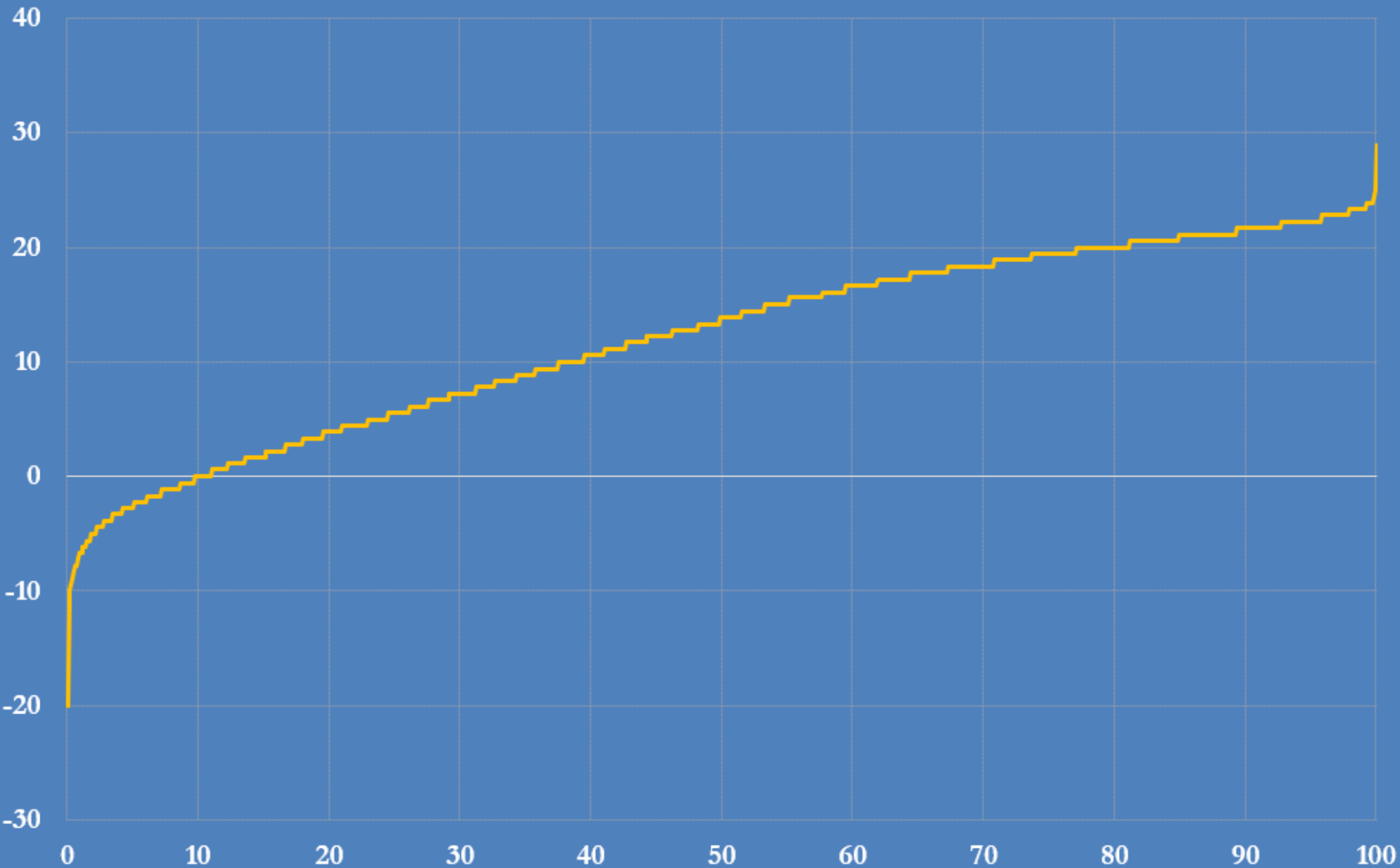


— Deviation from long-run average (1981-2010)

Source: Climate Prediction Center, U.S. National Oceanic and Atmospheric Administration; @JKempEnergy

# Daily minimum temperatures at Boerne, Texas, 1904-2021

## Degrees Celsius, percentile distribution

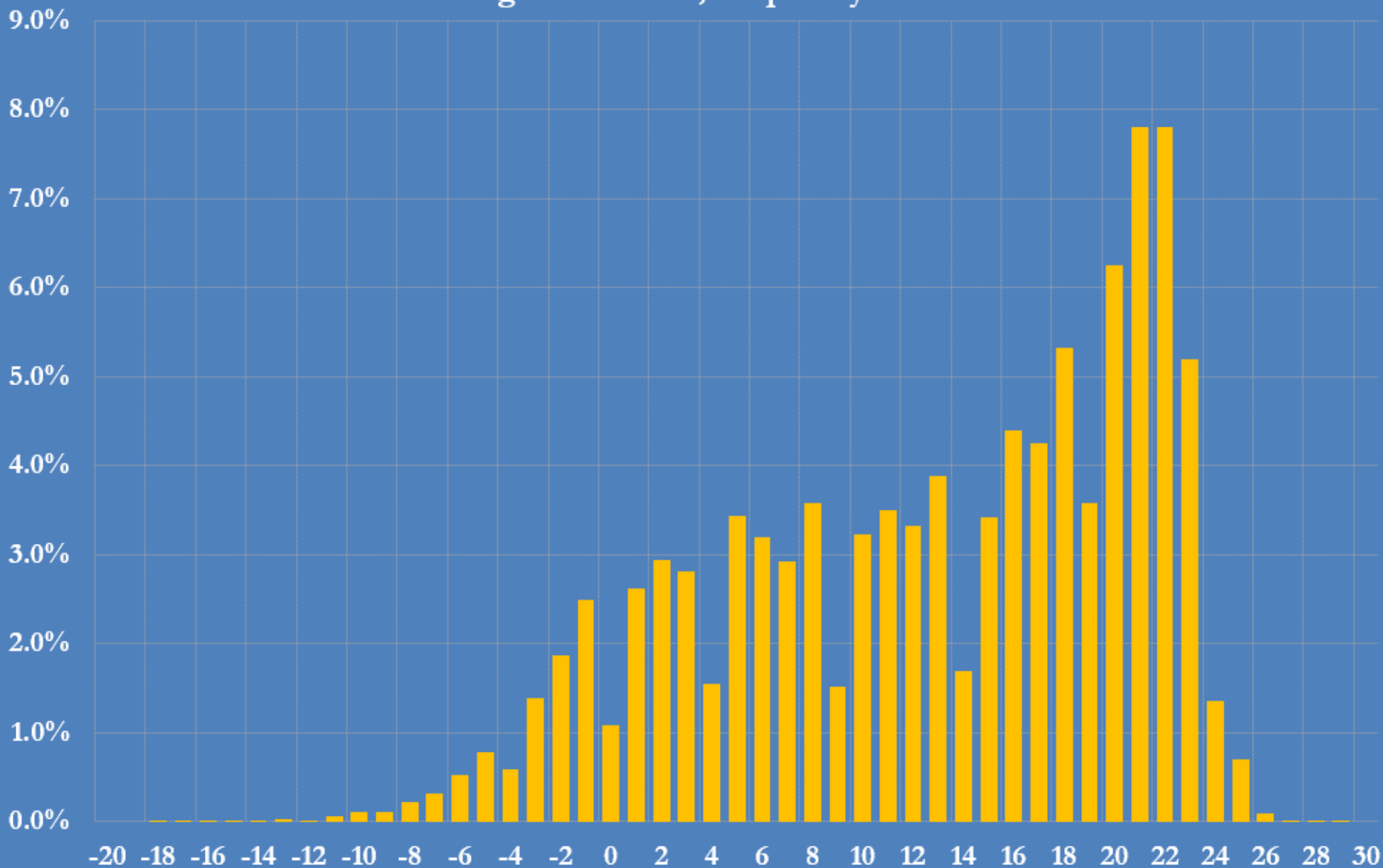


Source: U.S. National Centers for Environmental Information (NOAA)

@JKempEnergy

# Daily minimum temperature at Boerne, Texas, 1904-2021

## Degrees Celsius, frequency distribution

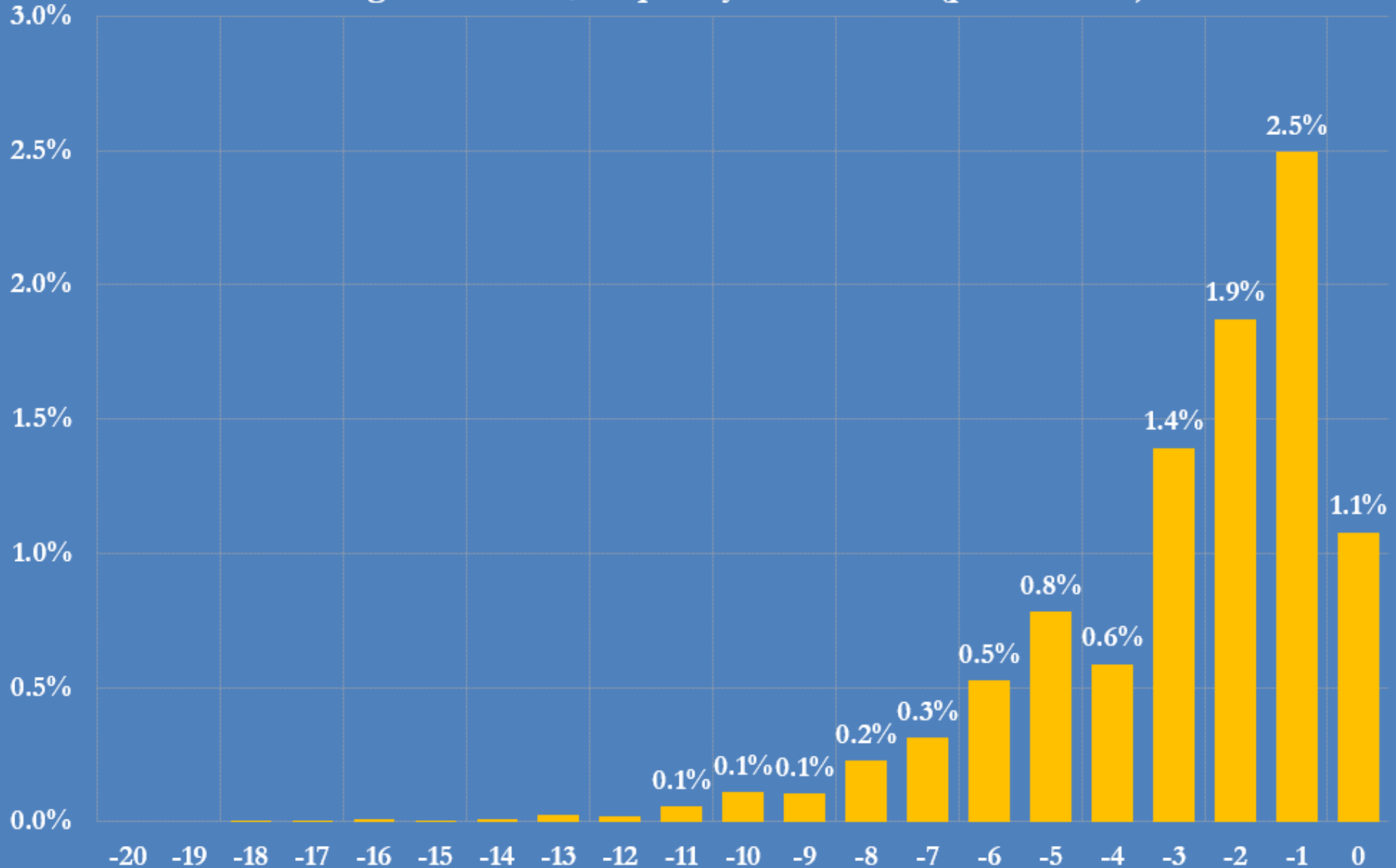


Source: U.S. National Centers for Environmental Information (NOAA)

@JKempEnergy

# Daily minimum temperature at Boerne, Texas, 1904-2021

## Degrees Celsius, frequency distribution (partial chart)



Source: U.S. National Centers for Environmental Information (NOAA)

@JKempEnergy